

SOCIAL-DEMOCRATIC HERALD

A JOURNAL OF THE COMING CIVILIZATION

WHOLE NO. 503

IN CLUBS OF FIVE, 10 WEEKS, 10 CENTS EACH, TO NEW NAMES.

FOR SUBSCRIPTION PRICE SEE THE FOURTH PAGE

TEN TH YEAR No. 47

THE MAN WHO SELLS HIS VOTE IS A TRAITOR TO HIS CLASS!

NOT in many years have the Milwaukee saloons had such a great harvest as in this election.

In this election the parties, with the exception of the Social-Democrats, have no platform. The candidates make their own issues, and they are lame issues indeed.

The election of David S. Rose would be a greater misfortune to our community than was the earthquake to San Francisco, because it would ruin thousands not only financially, but morally, and it would be a lasting disgrace to our city.

What Mr. Louis A. Dahlman says about the Socialists being Anarchists is not worth answering. It is on a par with Dave Rose's arguments. In short, Dahlman has all the moral depravity of Rose, without the courage of that depravity.

Why not be honest, Mr. Kelly, and say that the city should ask the power to take over such public utilities as are now in private hands? This can easily be done by changing the charter at the next charter convention, so that the city will get permission to raise the bond limit and take over these properties.

It is different with the Social-Democrats. Our candidates have been tried and never found wanting. Emil Seidel is an honor to the Common Council. We have made a study of social and municipal institutions and are studying them continually.

In the war of the revolution the American dead and wounded together numbered less than 8,000. The total life cost of the five years of civil war, from disease as well as death, was less than 300,000.

Mr. Pringle, who runs as a "business man," is making it a business to have as many as sixteen meetings in one night. Most of these meetings are held in saloons which have not even a hall connected with them.

And Rose makes his campaign accordingly. His main "campaign material" is free beer, free cigars, free lunch and even free fireworks, whenever "the refreshments" alone do not succeed as a "drawing card."

Then there is Mr. John T. Kelly—undoubtedly a more decent man than either of these two. But his campaign issues, the three-cent fare and lower price for gas are those of a cunning politician and not worthy of an honorable man.

And as for Mr. Thomas A. Pringle, who wants to run as a business man and a coffin manufacturer—we can only say that the manufacture of coffins surely cannot be considered a claim for the mayoralty, since Milwaukee is still alive, in spite of having had his friend Rose for mayor for so many years.

Yet all of this is of minor importance. The Social-Democratic party is a class organization of the proletariat and a part of the international Socialist movement. We have much greater things to fight than David S. Rose, Louis A. Dahlman or John T. Kelly.

During a single year American street railways killed and injured a few less than 49,000 persons. In New York the record of twenty-seven days alone showed 42 deaths and 5,500 injuries.

Victor L. Bergson

At producing hunger and distress and anxiety for those who work the capitalist system seems to be an unqualified success!

announced and it was seen that they had secured 214 votes for the resolution that was the subject of debate—only lacking twenty-three votes of having the premier debating society in Oxford declare for Socialism! Straws show the way the wind is blowing!

initiated and individual liberty will, in the lifetime of anyone now living, be willing to forego those advantages for any of the alluring sophistries of Socialism.—Wall Street Journal.

Every city should have its own municipal electric light plant and should not only light its own streets, but should be prepared to supply electricity to the homes at cost.

Elsewhere we print a statement of the railroad ownership of the country. It is gathered from the official report of the Interstate Commerce Commission. If the money earned by hard labor by the people were iron filings and each bloated capitalist or corporation were a magnet the people's money could not go to the big fellows any faster than it goes today.

Now is the Time to Chip In!

Wisconsin State Executive Board, E. H. Thomas Secretary.

John I. Beggs, the street car magnate of Milwaukee and St. Louis, has joined a balloon association and has been made a director. That settles it! There will be provisions for strap-hanging on all balloons hereafter!

How, it is not worth while to discuss his so-called issue. Any father or mother who has a son or a daughter growing up should consider it a natural duty to make use of every remaining hour between now and election to prevent the return of the rule of graft, crime and prostitution in Milwaukee.

There is something vitally wrong with the operation of the law and the courts toward the uninfluential offender, toward the poorer class. In Milwaukee not long ago a poor woman had to sacrifice her small savings, gained by toil over a wash tub, to save her boy from prison.

Everywhere we print a statement of the railroad ownership of the country. It is gathered from the official report of the Interstate Commerce Commission. If the money earned by hard labor by the people were iron filings and each bloated capitalist or corporation were a magnet the people's money could not go to the big fellows any faster than it goes today.

Now is the Time to Chip In!

Wisconsin State Executive Board, E. H. Thomas Secretary.

The HERALD, ten weeks for 10 cents, to new subscribers only.

The Glutch of Capitalism How inter-membership in directorship and stock ownership have developed and centralized control may be explained as follows:

socialism has become a vital political factor in Great Britain. Already there are thirty Socialist voters in the house of commons. The Nineteenth Century, in a recent article, declares that the Socialist vote of the world has doubled in the past ten years.

Brand Whitlock, the humanitarian mayor of Toledo, O., and successor to Golden Rule Jones, has written a criticism of the system of justice in this country—a matter of which he had made a close study for years, and even written a powerful purpose novel "The Turn of the Balance," upon.

Wisconsin State Executive Board, E. H. Thomas Secretary.

Previously reported: \$122.30 E. J. Palmer 25 Wm. Bateman 50 John H. Behling 1.00 James Asdale 1.00

Social-Democratic Herald PUBLISHED EVERY SATURDAY BY THE MILWAUKEE SOCIAL-DEMOCRATIC PUBLISHING COMPANY 344 Sixth Street Milwaukee, Wis.

Milwaukee Social-Democratic City Platform

The Social-Democratic party is the American expression of the international movement of modern wage-workers for better food, better houses, sufficient sleep, more leisure, more education, and more culture.

Social-Democratic Herald—Business Dept.

Address all communications, money orders, etc., to the MILWAUKEE SOCIAL-DEMOCRATIC PUBLISHING CO. Telephone Grand 2394. Private Telephone 344 Sixth Street, Milwaukee, Wis.

FOR OUR NEW READERS:

THIS COUNTRY is made up principally of working people, both industrial and agricultural, but it is ruled by the capitalist class, which is numerically a very small fraction of the population.

OUR PRESENT EXPERIENCE

Under present conditions the wage-worker is always dependent upon the man with means for an opportunity to work for a livelihood, and, therefore, is not free.

TERMS OF SUBSCRIPTION.

National Edition, 4 pages—One year, 50 cents; six months, 25 cents. Wisconsin Edition (including Milwaukee) 8 pages—One year, \$1.00; six months, 50 cents.

Program of International Social-Democracy:

- 1. Collective ownership of all industries in the hands of trusts and combines, and of all public utilities. 2. The democratic management of such collective industries and utilities.

MUST HAVE OUR RIGHTS.

In view of the charter convention, delegates to which are to be chosen this year, we demand that in the formulating of the new charter the city shall be empowered to control its own affairs and meet the needs of its own life.

The Deadly Parallel!

WALSH GETS ONLY FIVE YEARS. He Illegally Used a National Bank's Funds. On Trial Many Months.

IF YOU BELIEVE IN THE ABOVE, VOTE WITH THE SOCIAL-DEMOCRATS.

The community that will not allow its humblest citizen freely to express his opinion, no matter how false or odious the opinion may be, is only a gang of slaves.—Wendell Phillips.

REASON FOR CORRUPTION.

This capitalist system not only results in suffering, but also in corruption. For it is to the corruptive power of capitalism playing upon the venality, the uncertainty of the future, and the business instincts of those who have made politics a business that we owe the corruption of our government.

PUNISHMENT IS SWIFT.

Appleton, Wis., March 13.—In less than four hours from the time he passed a forged check in Shawano, Theodore Deletzke, aged 30, was on his way to the state penitentiary at Waupun.

Party News

Charters have been granted by the national office to locals in unorganized states as follows: Empire, Nev., six members; Alamogordo, N. M., ten members; Avis, six members; Cloudercroft, six members.

AN OLD FALLACY.

No intelligent man longer believes in the panacea of electing so-called "good men" to office. Plenty of "good men" have been corrupted by the bad temptations which they have tried to patch up and regulate.

POISONING THE FONT OF GOVERNMENT.

come to Cincinnati, where fraud and intimidation usually run riot on election day. There the vote brokers make perhaps more use of the "endless chain" method than elsewhere.

St. James Church

NINTH STREET AND GRAND AVENUE "The Church in the Working Classes"

TAN SHOES

ALL THE GO This Spring WE HAVE THEM! GIVE US A CALL Lamers Bros. SHOES 354 GROVE ST. MILWAUKEE, WIS.

Half Hours in the Herald Sanctum

Correspondents are urged to write as briefly as possible and on one side of the paper only.

NEAR-SOCIALIST BOOKS

By Writers Who Are Either Socialists or Sympathetic Toward Socialism. Just the Thing to Get Into the Hands of Non-Socialists as Well as Being Valuable for the Socialist's Library.

Milwaukee Institute

A MODERN Fully Equipped Institution FOR THE Successful Treatment of Acute and Chronic Disease OF BOTH SEXES. TERMS VERY MODERATE

NEAR-SOCIALIST BOOKS

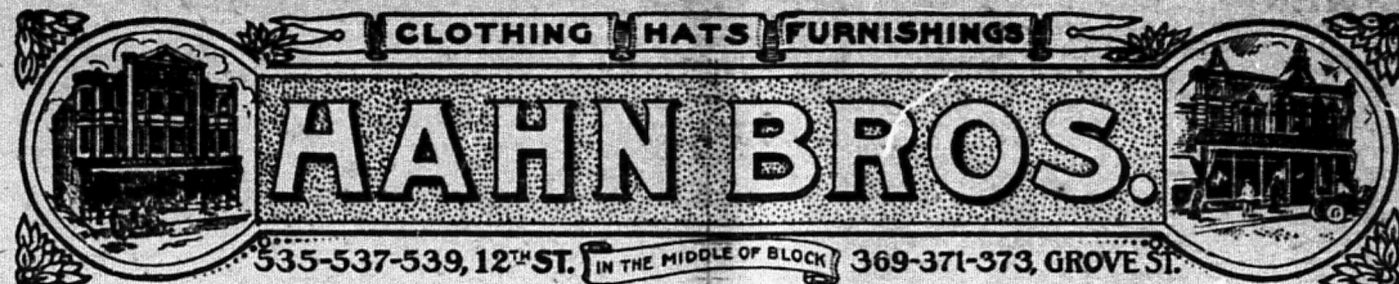
By Writers Who Are Either Socialists or Sympathetic Toward Socialism. Just the Thing to Get Into the Hands of Non-Socialists as Well as Being Valuable for the Socialist's Library.

JOSEPH SCHOSTAK

"The Bicycle Man" THE NEW IMPROVED Iver Johnson Bicycle and Racycle have arrived and are now ready for your inspection at my large showrooms.

Our Two Big Stores are located middle in the block: Our West Side Store on 12th St., between Walnut and Galena. Our South Side Store on Grove St., between Mineral and Walker—and are not connected with any other concern.

Look at Our Show Windows and convince yourself of the tremendous reductions we have made on all Suits and Overcoats and all Winter Garments. Positive reductions of one-third to one-half from former low prices.



Look! Read! Profit!
All winter goods are doomed to go—positively none carried over if we can help it. Our prices tell you that you are the gainer. Our handsome New Spring Suits, Top-Coats, Rain Coats, etc., are fast arriving. Room must be made, cost not considered. Come.

Winter Suits Must All Go

LAST CALL

All Winter Overcoats Must Go!

Workingmen, It Is Not Yet Too Late. If You Have Not Been to This Clothing Sale, Be Sure to Come Today or Next Week

We ask our patrons to take heed of this call, for it is our final clearance sale of the season. It is the greatest sale in Milwaukee's commercial history. We simply slaughter prices; throw prices so low that you will be compelled to buy; the every department sweeping reductions are made.



These Are Two of the Very Smart Styles Included in Our Great Suit and Overcoat Sale at \$12.50

It's a big stock, so big that you will hardly be able to tell where it begins or where it ends. Compare our makes, compare our values, compare our prices. This sale has by far surpassed our expectations. Just think of it! Fine, new, fresh, this year's Suits and Overcoats, the finest in the land, at such great reductions because we must make room for the enormous big Spring Stock already purchased. Remember, in this lot are hundreds of the finest Overcoats and Suits, which are positively sold at \$25.00, \$20.00 and \$18.00. Choice today and next week

\$12.50
All sizes and shapes. Fat and lean men can be fitted. Sizes 34 to 50.



Today and Next Week a Clean-Up Sale of High-Class Suits and Overcoats

Your unlimited choice of all our Men's Hand-Tailored Suits and Overcoats—odd lots of \$10.00, \$11.00, \$12.50, \$13.50, \$15.00 and \$16.50 Suits and Overcoats at \$7.50.

- \$10.00 SUITS AND OVERCOATS
- \$11.00 SUITS AND OVERCOATS
- \$12.50 SUITS AND OVERCOATS
- \$13.50 SUITS AND OVERCOATS
- \$15.00 SUITS AND OVERCOATS
- \$16.50 SUITS AND OVERCOATS at

\$7.50
All Sizes, and All Shapes Fitted



No store in the Northwest or elsewhere in the country has ever sold such splendid qualities at such LOW prices.

LAST CALL
Men's and Young Men's Suits at Half
About 200 Fancy Mixed Cassimere Suits, in single and double breasted styles, were considered great values at \$10.00, reduced to only..... **\$5.95**

LAST CALL
Men's and Young Men's Overcoats at Half
About 150 Men's Gray Melton Overcoats, \$10.00 and \$12.00 values, good lengths and well tailored—we have them in all sizes—next week..... **\$5.95**

LAST CALL
Men's and Young Men's Fine Suits at Half
Several hundred Black and Blue Tibets and Serges, fancy mixed worsted, single and double breasted styles—\$12.00 and \$13.50 values—reduced to..... **\$6.95**

LAST CALL
Men's Very Nobby Overcoats at Half
Several hundred Black and Gray Friezes and Meltons, also Black and Blue Kerseys and Vicunas—\$12.00 and \$13.00 values—next week..... **\$6.95**

Last Call Clearing Sale of Odds and Ends in Our Great BOYS' DEPARTMENT



- Odds and ends of Double-Breasted Suits, 8 to 16 years, \$3.00 and \$3.50 values, reduced to... **\$1.85**
- Odds and ends of Novelty Suits, fancy cassimeres, \$2.50 and \$3.00 values, at... **95c**
- Odds and ends of Boys' Novelty Overcoats and Reefers, \$2.50 and \$3.00 values, reduced to..... **\$1.45**
- Odds and ends of Sailor and Norfolk Suits, 3 to 9 years, \$3.00 and \$3.50 values, reduced to..... **\$1.95**
- Odds and ends of Boys' Double-Breasted Overcoats, 10 to 16 years, \$5.00, \$6.00 and \$6.50 values, reduced to..... **\$3.95**
- Boys' Long Form-Fitting Fancy Overcoats, 10 to 16 years, all new and nobby patterns, \$5.00 and \$5.50 values, at..... **\$3.45**
- Boys' Single-Breasted Form-Fitting Overcoats, gray, black and Scotch patterns, all sizes 10 to 16 years, \$4.00, \$4.50 and \$5.00 values, reduced to..... **\$2.95**
- Odds and ends of Boys' Military Overcoats, 3 to 9 years, dark gray and black, handsomely trimmed, \$3.00 values..... **\$1.95**
- Oxford Gray Russian Overcoats, cut long, silk embroidered, emblem on sleeve, nickel buttons, velvet collar, all sizes 3 to 8 years,..... **\$2.45**
- 15 different styles of Little Tots' Overcoats, 2½ to 10 years, this season's newest novelties, beautiful patterns and big assortment, at..... **\$2.95**
- Odds and ends in Boys' heavyweight Pure Wool Cassimere Suits, double-breasted Norfolk Suits, double-breasted Sack Suits, Eton Norfolk, Eton Sail-on—all \$5.00 values..... **\$3.45**
- Boys' Eton Norfolk and Sailor Suits, 2½ to 8 yrs., with bloomer trousers, double-breasted Norfolk, all \$3.50, \$4.00 and \$4.50 values, reduced to..... **\$2.95**
- 25 different styles of Norfolk, Eton Sailors, double-breasted Suits with bloomer pants, sizes from 3 to 16, all colors and plain blue, at..... **\$1.95**
- Odds and Ends—Boys' \$3.00 Reecer Coats..... **95c**
- Odds and Ends—Boys' \$3.50 Novelty Suits..... **95c**
- Odds and Ends—Boys' \$1.50 Worsted Sweaters..... **95c**
- Odds and Ends—Boys' \$1.00 Worsted Sweaters..... **69c**
- Odds and Ends—Boys' 75c Wool Sweaters..... **35c**
- Odds and Ends—Boys' 35c Wool Knee Pants..... **25c**
- Odds and Ends—Boys' 50c Corduroy Pants..... **27c**
- Odds and Ends—Boys' 35c Fleece Underwear..... **19c**
- Odds and Ends—Boys' 50c Percalé Shirts..... **19c**
- Odds and Ends—Boys' 50c and 75c Gloves..... **35c**
- Odds and Ends—Boys' 35c Gloves..... **19c**
- Odds and Ends—Boys' 50c Fur Lined Caps..... **35c**
- Odds and Ends—Boys' 25c Caps..... **12½c**
- Odds and Ends—Boys' 50c Waists..... **19c**
- Odds and Ends—Boys' Wool Toques..... **12½c**

LAST CALL
Gigantic Sale of Men's Shirts
50c Men's Fancy Percalé Shirts reduced to..... **19c**
65c Men's Fancy Percalé Shirts, separate cuffs, at..... **29c**
75c Men's Fancy Soft Negligé Shirts reduced to..... **39c**
\$1.00 Men's and Boys' Percalé Monarch Shirts reduced to..... **69c**
\$1.50 Men's and Boys' Wilson Bros.' Shirts at..... **95c**

LAST CALL
Men's Hats
100 dozen Men's Soft and Stiff Hats, \$1.50 and \$2.00 values, black and colored, reduced to..... **95c**

LAST CALL
A Clearance Sale of Men's Underwear
Odds and ends of Men's Camels Hair Underwear, 75c values, at..... **29c**
Odds and ends of Men's Natural Gray Fleece-Lined Underwear, wool, 50c values, reduced to..... **29c**
Odds and ends of Men's Heavy Ribbed Underwear, blue and gold, 60c values, at..... **39c**
Odds and ends of Men's Super-Merino Underwear, blue, flesh and natural gray colors, reduced to..... **45c**
Odds and ends of Men's All-Wool Ribbed Underwear, blue, pink and gray, \$1.00 values, reduced to..... **59c**
Odds and ends of Staley's All-Wool Natural-Gray Knit Underwear, \$1.25 values, reduced to..... **85c**
Odds and ends of Men's Finest Underwear, lamb's wool, vienna, natural wool and ribbed, 35 different kinds, reduced to..... **95c**
MEN'S HOSE AND GLOVES
Odds and ends of Men's Heavy Cotton Socks, brown mixed, 10c values, reduced to..... **5c**
Odds and ends of Men's Fancy Silk Embroidered or plain Balbriggan Hose, 83c values, reduced to..... **83c**
Odds and ends of the finest Imported Silk Striped, Silk Embroidered or Plain Socks, balbriggan and finest cassimere, all 35c and 50c values, reduced to..... **16½c**
All of our 50c and 75c heavy Leather Working Gloves and Mitts..... **35c**
Odds and ends of Men's Heavy All-Wool Camels Hair, natural gray or black, cassimere Hose, 25c values..... **12½c**
All of our 15c Leather-Faced Canvas Gloves go at..... **8½c**
All of our Heavy 10c Canvas Gloves go at..... **4½c**
All of our Boys' Leather Mitts go at..... **16½c**
All of our 50c and 75c Wool Gloves go at..... **35c**

LAST CALL Men's Heavy Canvas Gloves, 10c quality, reduced to..... 4½c	LAST CALL Men's Heavy Leather Faced Canvas Gloves, reduced to..... 8½c	LAST CALL Men's Heavy Union Made Suspender, 15c quality, reduced to..... 8½c	LAST CALL Men's Heavy Union Made Fireman's Sus-penders, 25c quality, reduced to..... 13c	LAST CALL Men's 50c President Suspender reduced to..... 33c	LAST CALL Men's 10c large size turkey red Handkerchiefs reduced to..... 3c	LAST CALL Men's 10c large size indigo blue Handkerchiefs at..... 3c	LAST CALL Men's 10c large size white and colored border Handkerchiefs reduced to..... 3c	LAST CALL Men's Heavy brown wool mixed Cardigan Jackets, \$2.00 quality, reduced to..... \$1.19	LAST CALL Men's Heavy Wool Sweaters, \$1.50 quality, reduced to..... 79c	LAST CALL Men's Heavy fur lined Caps, 75c values, reduced to..... 39c	LAST CALL Men's Sheep-skin lined Duck Coats, \$4 values, reduced to..... \$2.95	LAST CALL Men's Heavy Flannel Lined Duck Coats, \$2.50 value, reduced to..... \$1.45	LAST CALL Men's Heavy Flannel Lined Duck Coats, \$1.75 value, reduced to..... 95c	LAST CALL Men's Fancy Embroidered Cotton Sox, 12c values, reduced to..... 6½c	LAST CALL Men's All-Wool Sox, all colors, 25c values, reduced to..... 12½c
--	---	---	---	--	---	--	---	--	---	--	--	---	--	--	---

Carnival Ticket Receipts.

Previously reported.....\$1047.35

Ole Olsen......50

E. Kneusel......1.00

Carl Qutarg......1.00

Rebbsin & Miers.....1.00

Peter Packee.....1.50

Edward Duerstler.....1.50

Fred Nimmer.....1.50

William H. Buer.....1.50

Herman Schubert.....1.50

Charles Piemeisel.....1.50

G. Teske......1.50

Joseph Heim......1.50

Frank Tafelski.....1.50

Ernst Naras......1.50

Fred Reineman.....1.50

H. Piper......1.50

George Neff......1.00

A. A. Wieber......50

H. Pumpiansky.....1.50

Charles Maske......50

Fred Harter......1.00

G. Baumann......1.50

Alfred Hess......1.50

Charles Treder.....1.50

George Kintzinger.....1.50

Eighth Ward Branch.....1.50

Tenth Ward Branch.....2.40

August Kuehne.....1.50

Paul Mueller......50

H. Ohl......1.50

Ferdinand Mueller.....1.50

Andrew Hirtreiter.....1.50

Branch of Cudahy.....1.50

F. Krohn......1.50

Town of Lake Branch......50

Frank Zuern......50

Joseph Scholz......50

Fifteenth Ward Branch......90

Christ Ritter......8.00

Max Bensemann......1.50

Hugo Peterson......1.50

H. H. Jacobs......1.50

William Krause......50

Fred Bensemann......1.50

Milo Pflanz......1.50

Town of Milwaukee Branch......30

Just Auer......1.50

John J. Becker......1.00

Henry Schmidt......1.50

Herman Buech......1.00

N. D......1.50

Julius Mede......1.50

Twentieth Ward Branch......1.50

Edward A. Hoffmann.....1.00

David Kugler......1.50

Aug. Boldt......1.00

G. Grabowski......1.50

Fritz Schurer......1.50

John Schondorf......1.50

H. Rafeld......50

Frank Zuern......50

Joseph Scholz......50

E. A. Hudson......1.50

W. H. Leadley......1.50

L. Oberhofer......1.50

W. H. Gladding......1.50

Henry Lutz......1.50

Julius Pietsch......1.50

Adolph Wisotzki......50

H. Rintelmann......1.50

Edward Foreyt......1.50

J. H. Schweble......1.50

D. G. Fischer......1.50

F. Sieling......1.00

Ignatz Napierala.....1.50

George Eisenberg.....1.50

C. O. Hoyer......1.50

E. Retzlaff......1.50

H. T......1.50

Fred Krueger......50

Albert Prey......1.00

Richard Mueck......1.50

William Krahn......1.50

George Pfeiffer......50

Peter Jensen......1.50

Joseph Zuber......50

Gustav Gerders......1.50

William Fitch......1.50

Joseph Pfeiffer......50

August Losse......1.50

William Witte......3.00

M. Wrege......1.50

H. Wolfersdorf......1.00

Herman Walters......1.50

Christ. Menze......1.50

Otto Grosse......1.00

J. Galbraith......1.00

Ernst Pabst......1.50

Ernst Meissner......1.00

Chas. Erdmann.....1.50

H. Wehlitz......1.50

Max Ehrhardt......1.50

John Burger......1.50

Emil Ruhke......1.50

Charles Maske......1.50

Carl Biersach......1.00

Fred Jone......1.50

Herman Rollfink.....1.50

Frank Boness......1.50

N. Frey......1.50

Ernst Rost......1.50

J. Boruta......1.50

Aug. Bastian......1.50

A. G......1.50

William Hintz......1.50

William Hempeke......50

Fred Phillips......1.50

Louis Dunmann......1.00

John Grote......1.50

Paul Behrendt.....1.50

Max Vogt......4.00

Robert Rader......1.00

Twenty-second Ward

VOTE RIGHT!
UNION LABOR TAKE NOTICE! The many decisions recently rendered by courts against labor should make you take particular pains to prove to the world the power of the ballot. Your interest lies in electing Adolph Huebschmann circuit judge.

Picnic Ticket Receipts.
Previously reported.....\$997.60

Frank Zuern......50

R. P......1.00

A. Lange......40

William Meyer......1.00

Martin Unser......1.00

William Stemmler.....1.00

Thomas Panyard......1.00

Fred Maurer......1.00

Sixteenth Ward Branch......30

Richard Bodenberger.....1.50

\$1,234.05

Branch......2.40

John Oehl......50

William Meyer......1.50

Joe Bierbaum......1.00

Richard Kosinski......1.50

Fred Wall......1.50

Carl Tolzman......1.50

William Stemmler.....1.00

Herman Bastian......1.50

A. J. Welch......1.50

Walter Rohm......1.50

Fred Bunkfeld......1.50

T. F. Ramstahl......1.50

Ernst Angerman......1.50

R. Hesselbein......1.50

Frank Metcalf......1.50

William Kortes......1.00

Iron Molders' Union No. 125......30

Thomas Panyard......1.50

Fred Maurer......1.00

Sixteenth Ward Branch......30

Richard Bodenberger.....1.50

\$1,234.05

The total Picnic Ticket Receipts were printed as \$977.60 in our issue of Feb. 15. This should have been \$997.60.

WILL THEY PLEASE ANSWER?

When, before President McKinley was assassinated, you publicly called him "a damned blatant demagogue," Mr. Rose, were you helping "to incite weak-minded persons to violence?"

How many corporations are you taking retainers from, Mr. Attorney?

A Charter Convention in Danger.

For the first time in the history of Wisconsin a charter convention will be held, in which the political parties will be represented according to proportional representation.

The Merchants and Manufacturers' Association not only knows it has both capitalist parties in its pockets, but it does not care who else knows it!

STATE OF WISCONSIN, ss. County of Milwaukee.

I, F. O. Phelps, County Clerk of Milwaukee County, do hereby certify that the following is a list of the names of all persons for whom nomination-papers have been filed in my office...

Table with columns: DISTRICT, DEMOCRATIC PARTY, REPUBLICAN PARTY, SOCIAL-DEMOCRATIC PARTY. Rows list candidates and their addresses across various districts.

The said Primary Election will be held at the regular polling places in each Precinct within the above named Assembly Districts of Milwaukee County...

In testimony whereof, I have hereunto set my hand and affixed my official seal this 13th day of March, A. D. 1908.

AT THE THEATERS.

DAVIDSON The engagement of Frank Daniels, who comes to the Davidson Sunday for an engagement of four nights, is a feature of the theatrical year...

The Vorwaerts Program

Program for the entertainment held by the "Vorwaerts" Singing Society, Saturday evening, March 21, at the Barden Maennerchor Hall...

Meetings Next Week.

March 21—HALES CORNERS, Kaske's Hall, Thomas Feeley, John Collins...

Notice of Election

JUDICIAL OFFICERS AND DELEGATES TO NATIONAL PARTY CONVENTIONS. STATE OF WISCONSIN, ss. Department of State.

My Stunt

TAILORING Clothing to meet your personal desires—up-to-the-minute kind of work—by union tailors, under my own careful supervision. (Label.)

Spring Styles

now ready for inspection. Neat, elegant and nobby styles in SUITS for Men, Young Men, Boys and Children.

Bruett Clothing Company

FOND DU LAC AVENUE Cor. 10th and Lloyd Streets

ALHAMBRA

At the head of a company of sixty, Billy B. Van comes to the Alhambra Theater next week, in an entirely new version of "Patsy In Politics."

STAR THEATER

The "Cherry Blossoms" company, which comes to the New Star Theater this week, commencing with a matinee performance tomorrow...

Confirmation Suits Dollar-for-Dollar Value

Confirmation Suits at From \$5 to \$12 It seems almost marvelous—the power of a small amount of money—when you look at Confirmation Suits that we offer at from \$5.00 to \$12.00.

Confirmation Suits

Confirmation Suits at From \$5 to \$12 It seems almost marvelous—the power of a small amount of money—when you look at Confirmation Suits that we offer at from \$5.00 to \$12.00.

Confirmation Suits

Confirmation Suits at From \$5 to \$12 It seems almost marvelous—the power of a small amount of money—when you look at Confirmation Suits that we offer at from \$5.00 to \$12.00.

Confirmation Suits

Confirmation Suits at From \$5 to \$12 It seems almost marvelous—the power of a small amount of money—when you look at Confirmation Suits that we offer at from \$5.00 to \$12.00.

Confirmation Suits

Confirmation Suits at From \$5 to \$12 It seems almost marvelous—the power of a small amount of money—when you look at Confirmation Suits that we offer at from \$5.00 to \$12.00.

Confirmation Suits

Confirmation Suits at From \$5 to \$12 It seems almost marvelous—the power of a small amount of money—when you look at Confirmation Suits that we offer at from \$5.00 to \$12.00.

10 STAMPS Instead of One, With Each 10c Purchase **AI Day Monday**

WEINER Dry Goods Company

948 KINNICKINNIC AVENUE

10 STAMPS Instead of One, With Each 10c Purchase **AI Day Monday**

Special Sale of White Goods and Lawns

For Monday, March 23d, and All Week, We Place On Sale All the New and Fancy Novelties in White Goods and Lawns at Exceptionally Low Bargain Prices.

36-in. Pongee for shirtwaists and party dresses, very sheer and silky, in light colors and white, splendidly worth 75c per yard, for Monday at.....	48c	7c Calico Prints at 5/8c	Light colored Prints in assorted patterns and colors, the regular 7c quality, for Monday and the week, special at.....	5 1/2c
Dainty New Embroidered Swisses, regular 25c per yard value, extra special for Monday at.....	15c	18c Madras Cloths at.....	Madras Cloth for shirtwaists and men's shirts, short lengths in new patterns, sold in the regular way at 18c per yard, Monday's price.....	12 1/2c
27-in. White Lawns, exceptional 8c per yard value, on the bargain for Monday and the week at.....	5c	Good quality Apron Gingham, regular 8c quality, Monday, the yard at.....		5c
10 pieces Fancy Lawns in floral figures and shadow stripes, 15c per yard is what they are worth, our price for Monday.....	10c			

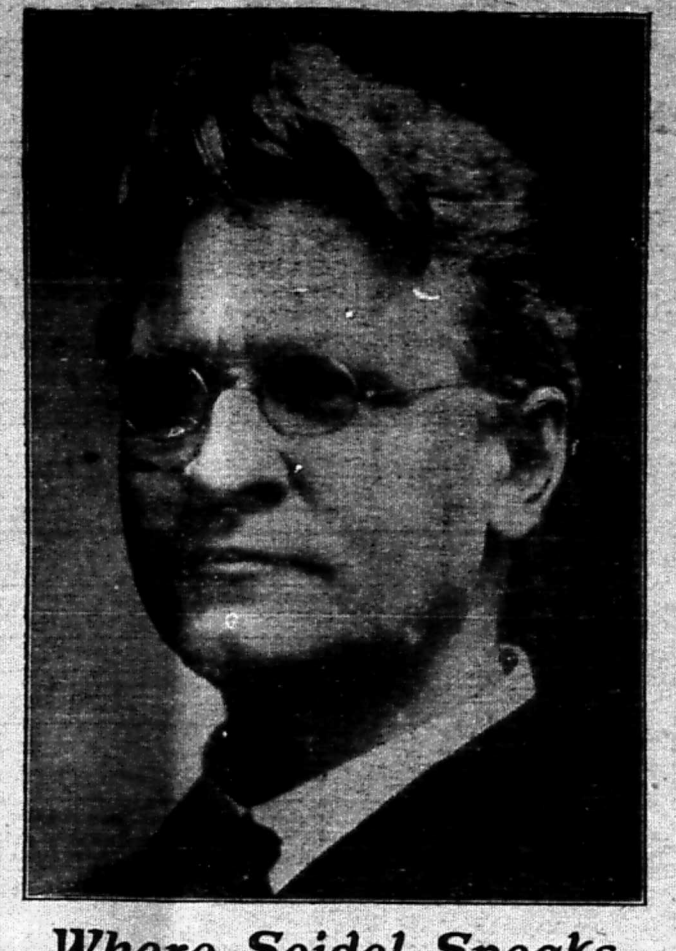
Laces and Embroideries

1,000 yards New Valenciennes Laces, with insertions to match, values up to 8c per yard, for Monday and the week, special at.....	5c	Lace Curtains	Lace Curtains, new and handsome patterns, 50c per pair values, Monday at.....	39c
1,000 yards Embroideries, widths up to 6 inches, values to 15c per yard, on sale special at.....	8c		Nottingham Lace Curtains, fleur de lis patterns, splendid 98c values, at.....	69c

Ten Stamps With Each 10c Purchase All Day Monday

Bargains in Furnishings for Men

Ferguson & McKinney's Corded Percalé Shirts, assorted patterns, all sizes, regular 75c value, special for.....	69c	Men's Union-Made Overalls, 65c values, special for Monday, day only at.....	48c	Men's Blue Chambray and Black Twill Working Shirts, union made, special at.....	45c
--	-----	---	-----	---	-----



Where Seidel Speaks

March 22—Bohemian Turn Hall, Twelfth and Vine Streets, 2:30 p. m.; Liedertafel Hall, 9 p. m.
 March 23—South Side Turner Hall, Third and National Avenues.
 March 24—Union Hall, 602 Chestnut Street, 2:30 p. m.
 March 25—Eckelmann's Hall, 3109 Lisbon Avenue; Rauch's Hall, Thirtieth Street and North Avenue.
 March 26—Hoeft's Hall, 961 Kinnickinnic Avenue, 8 p. m.
 March 27—Franklin Hall, 226 Grand Avenue.
 March 29—Schultz's Residence, Teutonia Avenue and Nash Street, at 2:30 p. m. Town of Milwaukee (12th Street car).

Would you have been "a traitor to your country" to have refused? Are not Polish workingmen members of the human family?

Seidel has been having some magnificent noon-day meetings, though you would hardly guess it from the daily papers. But when the capitalist candidates get a frost they call it a big affair.

The *Catholic Citizen* makes a timely editorial attack on the demagogues who are trying to stir up an Anarchist hysteria, for their own slimy ends.

STATE REGULATION IS THE LATEST DODGE TO HEAD OFF MUNICIPAL OWNERSHIP OF ELECTRIC LIGHT. BE ON YOUR GUARD.

A reader asks why the *Sentinel* allows Kelly so much space in its columns for his campaign statements. Probably because the Rose interests figure that if Kelly could be nominated most of the Dahlgren supporters would go to Rose and make Rose's election easier. Ask us something harder!

The Voters' League! What a piece of impudence! All it consists of is a "board of directors," who are too cowardly to let their names be known—men with certain grafts opposed to certain other grafts, in the main; one of whom is at least a proven bribe giver, and another one who has admitted taking a \$10,000 bribe from the Independent Telephone Company—and this happened only last year, and after he had already been a member of the league! And such men are to tell us who are honest and who are not, in politics!

The "whole thing" of the league is a mediocre clerk named Bell, and in him reposes the "right" of calling this man good and that man bad. "Great business!"

The only really tangible success that has come out of the Voters' League has been that it enabled this man Bell to land himself in a three thousand dollar job, or graft. This is the only positive fruit the league has thus far borne.

If the voters were to follow the picking of this humbug league the common council would become the worst thieves' roost of any such in the country. For the league is only there to slyly promote the "business" interests of a certain set of very sly capitalists.

WILL THE COILS OF THE CORPORATION SNAKE BE SHAKEN OFF BY MISRULED MILWAUKEE ON APRIL 7?

At Jacob's Hall, Twentieth Ward, Thursday night, Kelly gave another exhibition of a lawyer's power of evasion. He was asked if it had not already cost the city \$8,500 for the state commission and the city had nothing to show for it. "No, sir," said Kelly. "It hasn't cost the city a cent."

"But where does the \$8,500 come in?"

"Oh, it cost the city \$8,500 to go over the company's books."

And the crowd gave Kelly the laugh. But he opened a keg just the same.

The work of the Social-Democrats to bring about good street car service in Milwaukee will keep right on, in spite of the efforts of one set of capitalists on the one side to embarrass it by gang methods, and the efforts of another set to thwart it on the other side by the foxy "state regulation" game. We do not want the state to run Milwaukee. We want HOME RULE!

And we have already seen enough of state regulation to see the failure of it. As soon as the railway commission let down, Milwaukee people had to put up with worse car service than ever. Everybody knows that!

Ald Seidel's resolution that passed the council Monday, Jan. 18, instructed the city attorney to demand of the railway commission that a three-cent fare be exacted of the Beggs company—which would, of course, merely start the matter rolling, for Beggs will unquestionably carry the fight into the courts.

At last Dave Rose has been goaded into admitting that he first made his appearance in Milwaukee as lieutenant of the Darlington Rifles, coming here to shoot down Polish workmen who were on strike for an eight-hour day. Dave says he

White Maple Kitchen Cabinets

The most practical and convenient piece of furniture ever designed for the kitchen: It is a Cupboard, Table and Flour-Bin all combined in one—particularly useful for the storing of kitchen utensils.

This elegant Kitchen Cabinet, special for next week

\$13.75

The height of this cabinet is 66 inches, and the width 52 inches. The general cabinet work is of the best. The flour bins are all smoothly sanded; the doors have the most improved patent latches to be had; all the hardware used on these cabinets (such as drawer-pulls, knobs and hinges) are cast brass; the lumber used in building them is the finest selected white maple stock to be had.

Everything in Furniture for the Home

KUNZELMANN-ESSER CO.

HOUSE FURNISHERS

460-462-464-466 Mitchell St., Bet. 2d and 3d Aves.

ARE YOU GOING TO VOTE THE WAY CORPORATION MONEY IS ASKING YOU TO?

DAVIDSON

Coming Sunday Four Nights Only—No Mat. Chas. Dillingham Presents

FRANK DANIELS

In His Latest Comic Opera Success

THE TATOODED MAN

Music by Victor Herbert; Book by Smith and Fowler

PRICES—All Performances—\$1.50, \$1.75c, 50c, 25c

Town Topics by the Town Crier.

DON'T SHIRK THE PRIMARIES. BE "JOHNNY-ON-THE-SPOT!"

Rose says it makes him "weary" to "hear union men shouting for Seidel." Naturally!

Go to the primaries like a patriot on Tuesday and vote the straight Social-Democratic ticket.

There's a show coming to a local theater called "Bunco in Arizona." They ought to give Dave a front box.

The facts that are coming out about Shippy rather spoils your bunk about terrible conspiracies, eh! Dave?

Only a lawyer, and a foxy one, would have the face to go before the voters with such three-cent fare bunk as Kelly is indulging in at this time.

Have a care, David! You know Maccauly said that "patriotism is the last refuge of a scoundrel." More than one scoundrel has tried to hide his scoundrelism behind a country's flag!

NOTICE OF Primary Election

State of Wisconsin, County of Milwaukee—ss.

Notice is hereby given that at a Primary Election to be held in the several Towns, Villages, Wards and Election Districts of the County of Milwaukee, on Tuesday, March 24th, 1908, the following candidates for the office of Supervisor are to be nominated:

Candidates for Supervisor for the First Assembly District, consisting of the First and Eighteenth Wards of the City of Milwaukee.

Candidates for Supervisor for the Second Assembly District, consisting of the Second and Sixth Wards of the City of Milwaukee.

Candidates for Supervisor for the Third Assembly District, consisting of the Seventh, Tenth and Eleventh Wards of the City of Milwaukee.

Candidates for Supervisor for the Fourth Assembly District, consisting of the Twelfth and Thirteenth Wards of the City of Milwaukee.

Candidates for Supervisor for the Fifth Assembly District, consisting of the Fifteenth and Sixteenth Wards of the City of Milwaukee.

Candidates for Supervisor for the Sixth Assembly District, consisting of the Nineteenth and Twentieth Wards of the City of Milwaukee.

Candidates for Supervisor for the Seventh Assembly District, consisting of the Twenty-first and Twenty-third Wards of the City of Milwaukee.

Candidates for Supervisor for the Eighth Assembly District, consisting of the Twenty-fourth and Twenty-sixth Wards of the City of Milwaukee.

Candidates for Supervisor for the Ninth Assembly District, consisting of the Twenty-ninth and Thirtieth Wards of the City of Milwaukee.

Candidates for Supervisor for the Tenth Assembly District, consisting of the Third and Fourth Wards of the City of Milwaukee.

Candidates for Supervisor for the Eleventh Assembly District, consisting of the Fifth and Seventh Wards of the City of Milwaukee.

Candidates for Supervisor for the Twelfth Assembly District, consisting of the Ninth and Eleventh Wards of the City of Milwaukee.

Candidates for Supervisor for the Thirteenth Assembly District, consisting of the Thirteenth and Fifteenth Wards of the City of Milwaukee.

Candidates for Supervisor for the Fourteenth Assembly District, consisting of the Seventeenth and Nineteenth Wards of the City of Milwaukee.

Candidates for Supervisor for the Fifteenth Assembly District, consisting of the Twenty-first and Twenty-third Wards of the City of Milwaukee.

Candidates for Supervisor for the Sixteenth Assembly District, consisting of the Twenty-fifth and Twenty-seventh Wards of the City of Milwaukee.

Candidates for Supervisor for the Seventeenth Assembly District, consisting of the Twenty-ninth and Thirtieth Wards of the City of Milwaukee.

Candidates for Supervisor for the Eighteenth Assembly District, consisting of the First and Third Wards of the City of Milwaukee.

Candidates for Supervisor for the Nineteenth Assembly District, consisting of the Fifth and Seventh Wards of the City of Milwaukee.

Candidates for Supervisor for the Twentieth Assembly District, consisting of the Ninth and Eleventh Wards of the City of Milwaukee.

Candidates for Supervisor for the Twenty-first Assembly District, consisting of the Thirteenth and Fifteenth Wards of the City of Milwaukee.

Candidates for Supervisor for the Twenty-second Assembly District, consisting of the Seventeenth and Nineteenth Wards of the City of Milwaukee.

Candidates for Supervisor for the Twenty-third Assembly District, consisting of the Twenty-first and Twenty-third Wards of the City of Milwaukee.

Candidates for Supervisor for the Twenty-fourth Assembly District, consisting of the Twenty-fifth and Twenty-seventh Wards of the City of Milwaukee.

Candidates for Supervisor for the Twenty-fifth Assembly District, consisting of the Twenty-ninth and Thirtieth Wards of the City of Milwaukee.

Candidates for Supervisor for the Twenty-sixth Assembly District, consisting of the First and Third Wards of the City of Milwaukee.

Candidates for Supervisor for the Twenty-seventh Assembly District, consisting of the Fifth and Seventh Wards of the City of Milwaukee.

Candidates for Supervisor for the Twenty-eighth Assembly District, consisting of the Ninth and Eleventh Wards of the City of Milwaukee.

Candidates for Supervisor for the Twenty-ninth Assembly District, consisting of the Thirteenth and Fifteenth Wards of the City of Milwaukee.

Candidates for Supervisor for the Thirtieth Assembly District, consisting of the Seventeenth and Nineteenth Wards of the City of Milwaukee.

MILWAUKEE'S GREATEST ECONOMY CENTER

Cloaks Suits - Millinery etc.

LEVY & KAHN

NATIONAL AVE. BETWEEN GROVE ST. & FIRST AVE.

Greatest Skirt Values Ever Offered

500 New Spring Tailored Skirts

A surplus stock from one of the largest Cleveland manufacturers will be placed on sale here Monday at 65c on the dollar. TWO lots, each representing values from \$6.50 to \$8.95.

are divided as follows:

LOT ONE—Tailored Skirts made of Chiffon Panama in black, blue, brown, grey and checks, the styles are in the new plaited effects and trimmed with Taffeta bands—extra full sweep—200 on sale Monday at the uniform price of..... **\$3.95**

See Our Window Display.

LOT TWO—Tailored Walking Skirts of all-wool material, in the new small checks and stripes—handsomely trimmed with folds of taffeta bands or self material—15 stylish models in the popular gored and plaited effects—not a skirt with less than four yards sweep—values to \$8.95—sale Monday..... **\$4.95**

See Our Window Display.

Bargain Millinery

100 Trimmed Hats—large, medium and small shapes, in all the new Spring colorings and black—a style for every face—superior values to \$5—specially priced at..... **\$3.75**

Untrimmed Shapes—popular straw braid hat shapes—all colors and black—also black imitation horse hair flats—sold regularly at 98c—specially priced for Monday..... **59c**

ALHAMBRA

Commencing Tomorrow (Sunday) Matinee—Other Matinees Tuesday, Thursday, Saturday

THE P. H. SULLIVAN AMUSEMENT COMPANY

PRESENTS THE PRESIDENT OF LAUGHVILLE

BILLY B. VAN

And His Committee of Fifty in the Musical Campaign

PATSY IN POLITICS

Prices 15c-25c-35c-50c-75c

BIJOU

Beginning Sunday Matinee, 2:30
Matinees Wednesday and Saturday

America's Leading Author-Actress

LILLIAN MORTIMER

IN

Bunco in Arizona

By MISS MORTIMER

A Tremendous Production Real Indiana and Cowboys & Trained Horses & Miss Mortimer Will Hold Stage Receptions at Wednesdays and Saturday Matinees

Week Beg. Sunday Mat., Mar. 29
Chas. E. Blaylock Presents The Dainty Comedienne and Dancer

MISS ORCH SPONER

In Two Musical Thrillers
"THE BANGER AND THE KING"
"THE GIRL RAFFLES"
FORTY PROPS

was "serving his country!" Will he tell that down in the Polish wards! It didn't feel like it to the men who were shot. The truth is he was serving certain capitalists and corporations, just as he has been doing ever since, to the city's cost.

Fourth, Mr. Seidel is paying as high wages as are paid in any shop in the stove pattern business, and the conditions are very fair.

Henry Sauer, Business Agent Patternmakers' Milwaukee, April 20, League.

Government by Commission!

"I am thankful that traction affairs in the city of Milwaukee have gotten into the hands of the railroad commission of Wisconsin, an intelligent and efficient body of men, free from local prejudices."

"It is the best thing that ever happened to the Milwaukee Electric Railway and Light Company."

"The examination was satisfactory to us and should be to the people, as it certainly was ably conducted by their city attorney."—John I. Beggs in a Thanksgiving interview in the Milwaukee Free Press, Nov. 24, 1907.

A straw vote was taken this week at the Milwaukee Academy, which is a silk stocking school on the East Side, for the education of the sons of Milwaukee's codfish aristocracy, who would be contaminated by mingling with common children at the public schools. The vote showed preferences for all the capitalistic party aspirants for mayor—a sort of exploiters' verdict. The papers gladly published the result.

A straw vote was also taken the other night in Milwaukee at the night school in one of the Eighth Ward public schools, attended largely by sons of the working people who make our civilization and do not live by preying on others, and when the result was before the teachers they were so embarrassed by it that they refused to announce it to the pupils who asked how the poll had stood. As a matter of fact the vote showed 35 votes for Seidel, the Social-Democratic candidate for mayor and the old party candidates were way in the rear. And the newspapers did not print it!

To the Campaign Committee of the Social-Democratic party.—With reference to the question of the relations existing between Mr. Emil Seidel, candidate for mayor on the Social-Democratic ticket, and the Patternmakers' League, I, as business agent of that union, desire to make the following statement:

First, Mr. Seidel has never refused to employ union men.

Second, Mr. Seidel personally was always very friendly to the Patternmakers' League. Before venturing into business, Mr. Seidel was a member of the Carvers' Union himself. But Mr. Seidel is only a

GAYETY

WEST WATER ST., NEAR GIMBELS'

Week Commencing Sunday Matinee MARCH 22

IRWIN'S New Majestics

Matinee Daily—Ladies' Mat. Thurs.

NEW STAR

36 & Wells Mal. Daily

Week Beginning Sunday, March 22

The Cherry Blossoms

LADIES' DAYS: Wednesday and Friday

FOLLOW THE CROWD

Grand Concert and Ball

ARRANGED BY THE

United Socialist Singing Societies

(Under the Auspices of the S.-D. Party County Central Committee)

AT THE SOUTH SIDE ARMOY HALL (Get A. V. Bet. Latham and Mitchell)

Sunday AFTER-NOON, April 12

ADMISSION, 10 CENTS—AFTER 9 O'CLOCK, 25 CENTS