

The 20 pages of this PDF file are photos I took of pages in a rare bound volume of Workers Theatre held by Tamiment Library.

These are in most cases without post processing. Thus, though of (grayscale / halftone) and bi-tonal images on white paper, they have a sick yellow color to them. The recorded paper size in each image is absurdly off the actual paper size of the crop, for when you take a photo with a digital SLR of a page, the camera has no way of knowing what the size of the object you are photographing is. By some idiosyncrasy of the Canon DSLR I used and/or of Acrobat and Photoshop converting the images to pdf and tiff files, the paper size gets recorded as monstrous: An 8 x 11 size page filling the frame will be said to be something like 50 x 70 inches in dimensions!

One would have to look at the pages in the microfilm scans (for which I was able to set paper size to a reasonable approximation of the actual paper size), use the ruler function in Acrobat or Photoshop, determine the size of the crop, and resize these images, accordingly, in terms of noted paper dimensions.

Then one would want to convert the color images here to gray scale, and in many cases boost brightness (and perhaps contrast as well) to get an image closer to what the actual paper looked like.

I just ran out of time and energy working on this archive. There are two instances where I converted the image to gray scale, and one where I experimented restoring a photo of a pure black and white graphic to be a bi-tonal image.

I present here the images of selected photos and graphics from the pages of Workers Theatre, to enhance this record of the publication. Maybe someday someone will take the time to whip these images into shape and incorporate them into the scans of the whole issues I present here.

Better yet... maybe someday someone will be able to unbind (if necessary) the original Workers Theatre issues and PROPERLY scan them on a flat bed scanner.

---marty

Martin H. Goodman MD
Director, Riazanov Library digital archive projects
February 2020
San Pablo, CA

Table of Contents of CROPS of photos and graphics in issues of New Theatre 1931-1933

- 1 v2n06-p06-sep-oct-1932-p06-photo.pdf
- 2 v2n06-sep-oct-1932-p18-photo.pdf
- 3 v2n2-may-1932-p09-photo.pdf
- 4 v2n2-may-1932-p11-photo.pdf
- 5 v2n2-may-1932-p15-photo.pdf
- 6 v2n3-4-june-july-1932-p09-photo-B.pdf
- 7 v2n5-aug-1932-p05-photo.pdf
- 8 v2n5-aug-1932-p17-photo.pdf
- 9 v2n5-p19-aug-1932-p19-photo-A.pdf
- 10 v3n1-2-jan-feb-1933-p03-graphic-1.pdf
- 11 v3n1-2-jan-feb-1933-p03-graphic-2.pdf
- 12 v3n1-2-jan-feb-1933-p03-graphic-3.pdf
- 13 v3n1-2-jan-feb-1933-p03-graphic-4.pdf
- 14 v3n1-2-jan-feb-1933-p05-graphic-GRAY.pdf
- 15 v3n1-2-jan-feb-1933-p06-graphic-GRAY.pdf
- 16 v3n1-2-jan-feb-1933-p09-photo-Toikio-theatre.pdf
- 17 v3n1-2-jan-feb-1933-p11-photo-German-Agitation-Group.pdf
- 18 v3n1-2-jan-feb-1933-p15-graphic-Roberts.pdf
- 19 v3n3-mar-1933-p03-BW.pdf
- 20 v3n3-mar-1933-p03-GRAY.pdf







the

HNE

it of political education.
es not understand the

tions. The leader has the function to lay out 'l
plans and to direct the activities in order to com

IE"

BY

HNE





7

E

HNE

more than two months the workers theatres of this
ry were in a state of mobilization, concentrated on the

tion campaign, and others became subjects of our plays.
(To be concluded)



tion

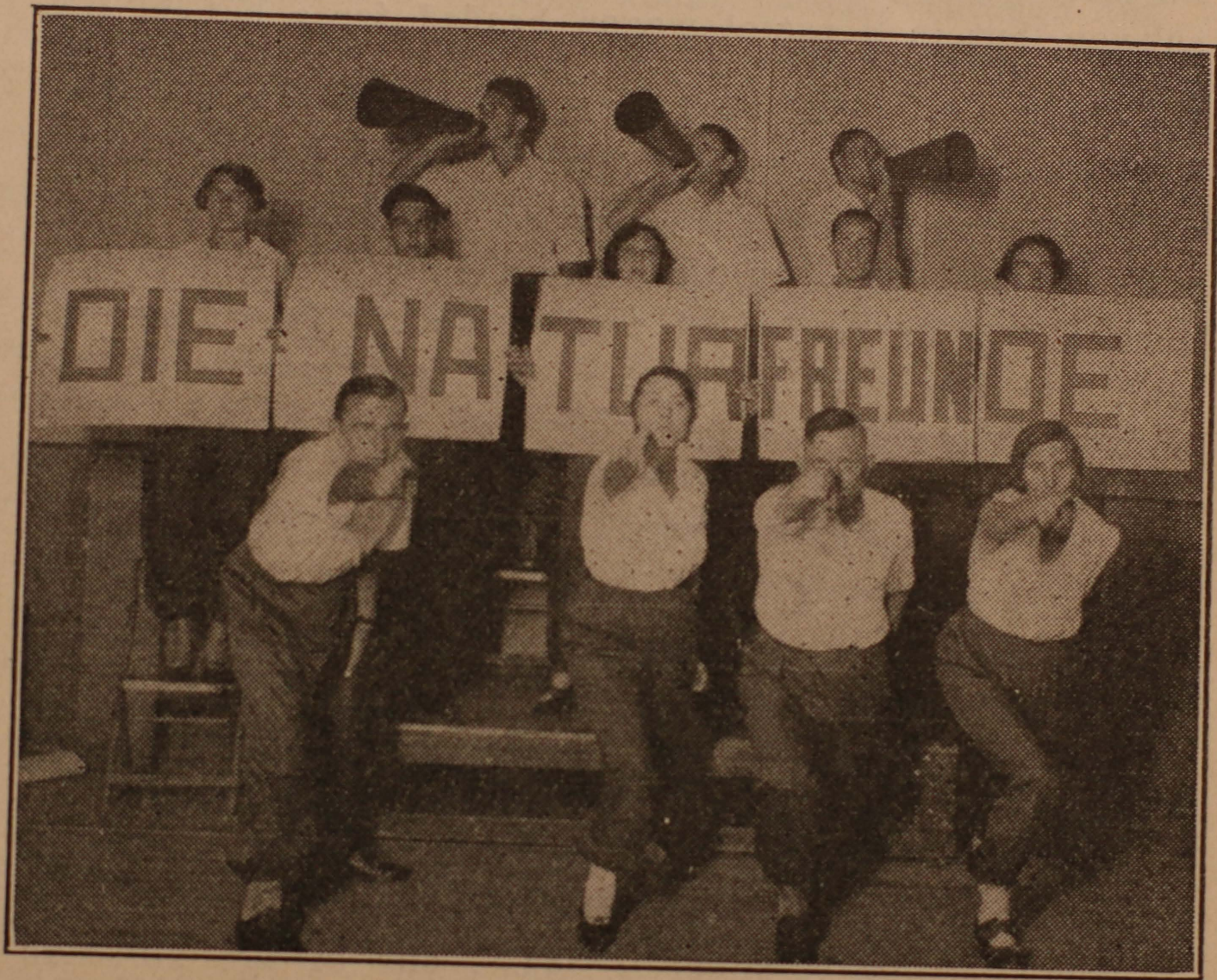
NO DEPRESSION FOR ME

100 OVER 650

VOTE NOW! FOR REPUBLICAN

GET FAT IN 60 DAYS





The Nature Friends, German Agit Prop
Troupe in Action



A scene from the theatre of the Trade Unions in Moscow.

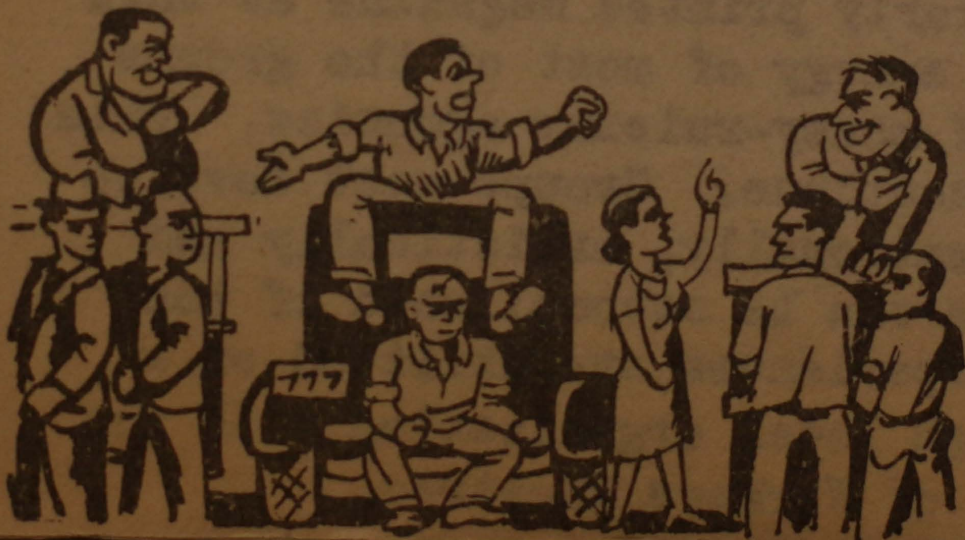
SHIFTING SCENES

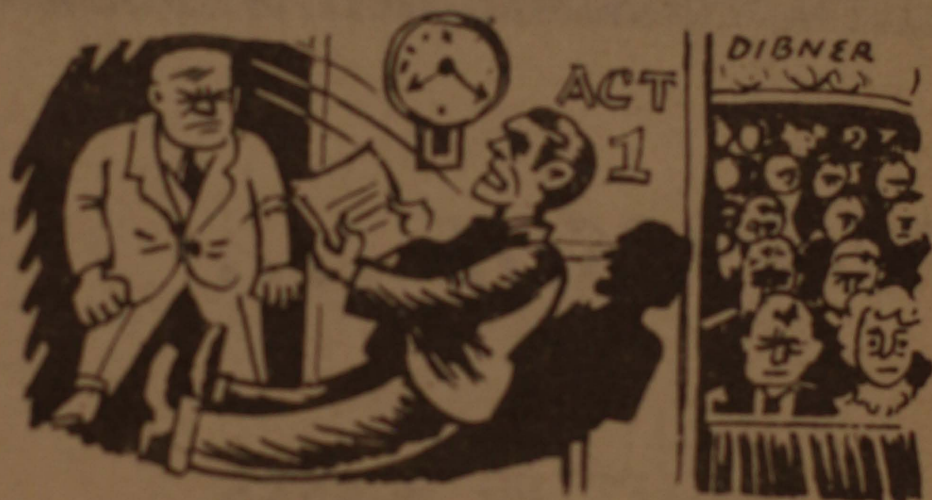
by AGITPROP





The newest thing in stages for agitprop theatre groups was improvised by the Red Players of New York in the recent election campaign. Coming to a street corner where both the Democratic Party and the Independent group were holding meetings, the RP cast their eyes about them, spied a parked automobile, and proceeded to present "Vote Communist" from the rear bumper (and the ground, of course). Gotta hand it to them--they thinks fast.



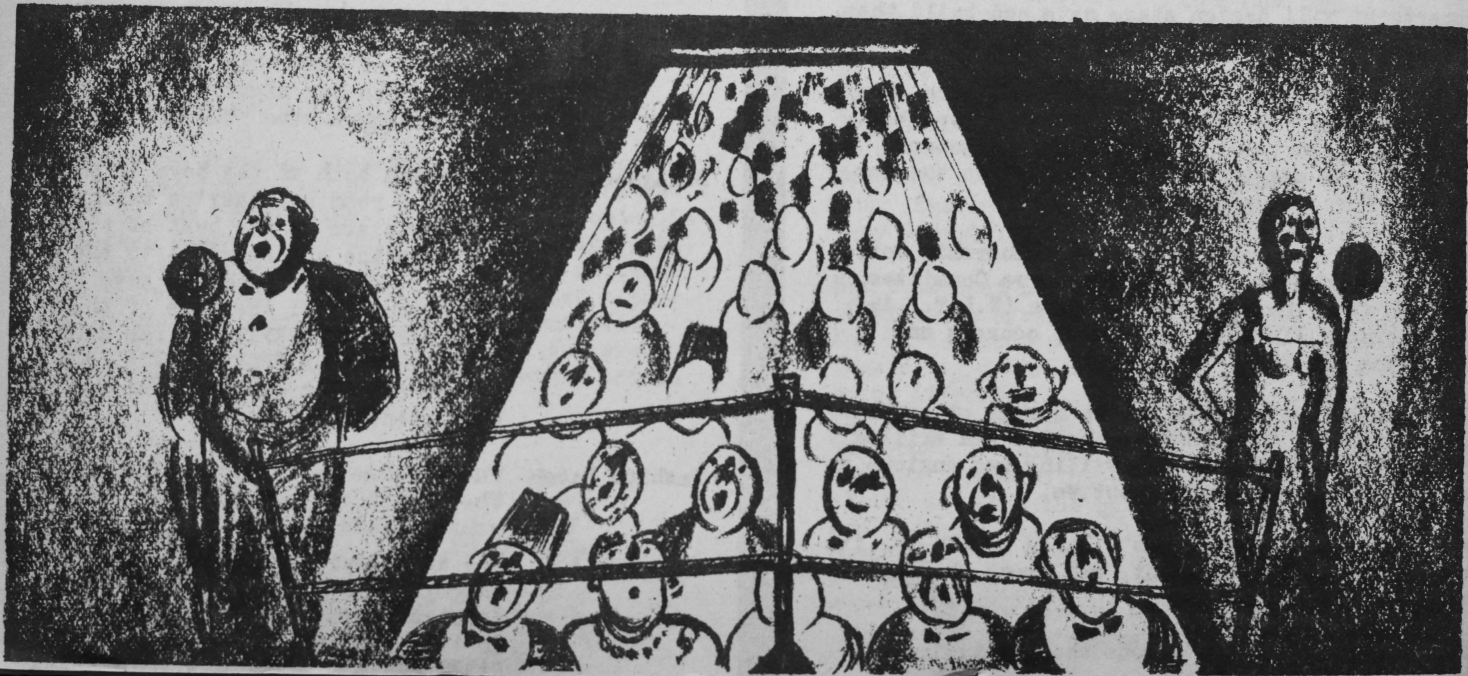


The Path of the Crisis--

Barbara Laird-Finney, "showgirl in financial straits," turned on the gas for good recently. She left a thirteen year old son. . . For having the nerve to beg from zee great Maurice Chevalier, X, hungry and unemployed, was ar-

with a following of gold tales

who can forge an alphabet . .



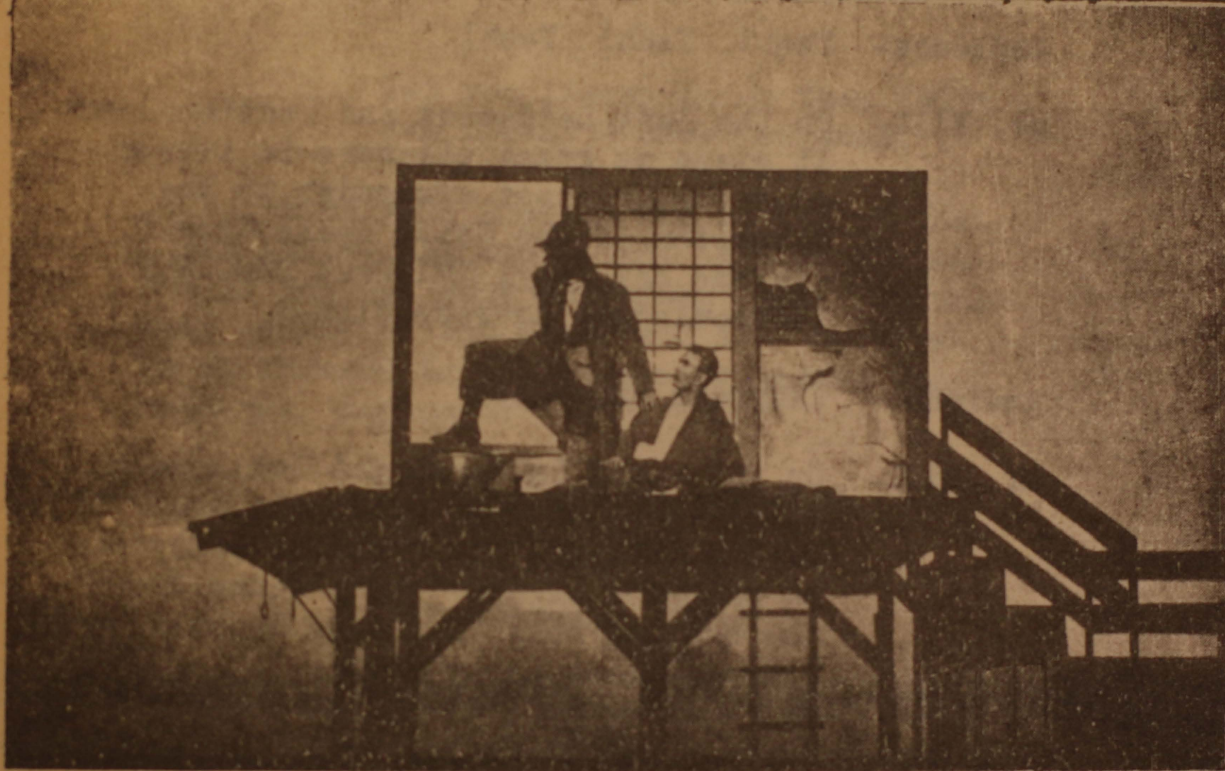


ALL SEATS 10¢

EX
ION

REDUCED
PRICES

WORKERS THEATRE



TOKIO, JAPAN, LEFT THEATRE. "Coal Dust", review of the miners' strike, by Mioshi.

they're
a fake
oleon du
lows his
Demo ret
they're
corner t
at it qu
corner t
. . boy
clinch -

Audience- B
C

(The t
P. S.

Ballyhoo- P

u
a
t
o

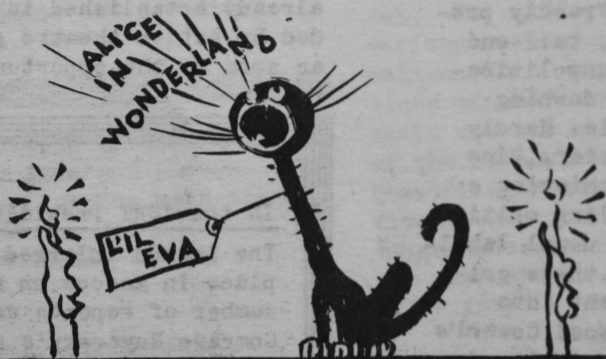
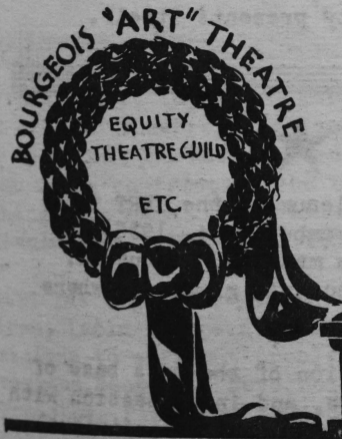


German Agitation and Propaganda Group. A section of the Moscow Central Workers' Theatre of Youth. *Colonne Links* (Column Left).



ROBERTS





LEGITIMATE THEATRE